



2025-2028

# Seattle PlayGarden Strategic Plan



## Planting the seeds of inclusive play, growth and leadership through:

- Deepened community engagement
- Increased program capacity
- Specialized care for our one-acre gardens and facilities

The Seattle PlayGarden is celebrating 20 years of inclusive summer camp and 15 years of nature based preschool and is now visited by thousands of families each year. Like in a garden, our community has grown robust and strong through careful planning and cultivation. The whole garden is strengthened by providing each plant with what they need to thrive. Once established, the garden takes on a complexity where each shrub, flower or tree plays a critical role in the health of the whole. In the next three years, we will sow seeds of increased community engagement, which will grow alongside increased program capacity (serving more people). Maintaining the one-acre garden and structures will, likewise, enhance the experience for all who come to play, grow and learn.

The tools I received from your **Say YES to Kids with Disabilities** workshop have been very helpful for me in my work at the Seattle Aquarium and the work with the teens.

—Apyrl Reed  
Youth Engagement Mentor, Seattle Aquarium



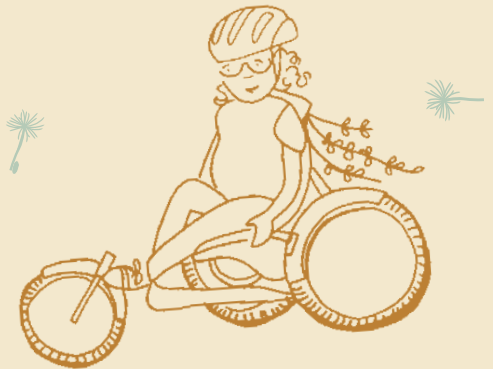
Last summer I worked as a volunteer counselor at the PlayGarden for two weeks. It is a fun, inclusive camp for kids with and without disabilities. **I was the only disabled junior counselor there, and it touched me to see how much that meant to people.**

I worked on the basketball court with many kids during the hot days, showing up in my wheelchair basketball chair and teaching them how to play. This work was meaningful to me because it gave me the opportunity to show other kids with disabilities that they can be successful athletes like myself. It also meant a lot to me to have some of the parents come up to me and ask me about the sport and where they could sign their kids up to play.

—Graham Thomson,  
Junior Counselor, 2023

It was incredibly positive. The kids were obviously cared for, but the way that Bellamy in particular felt validated, seen, and comfortable in that setting was just amazing. Less than two years ago, public attention would've led to a massive meltdown/elopement. When the counselors shared that she sang in front of the whole group, I was just amazed. **PlayGarden is truly inclusive and the kids who need that feel it.**

—Parent of Summer Camp participant



2025-2028

# Strategic Priorities and Actions

## Deepened Community Engagement

### Outcome

We envision a world where people with disabilities are fully included in the community and all programs and places—not just the PlayGarden—can accommodate everyone. To reach this goal, we offer trainings and workshops throughout the country and online, which, for example, teach organizations how to offer inclusive programming and help parents figure out how to advocate for their children with disabilities. We seek to expand this outreach as broadly as possible in coming years.

### Priorities

- Engage youth service providers in serving those with disabilities
- Survey parents and youth service providers on their program needs
- Provide 3 Trainings and Workshop series both online and in person per year and 3 site-specific trainings per year
- Present at local, regional and national conferences
- Expand the Online Learning Hub by adding new lessons each year
- Steward community partnerships by hosting and attending partner events

### Resources Required

- Increase Inclusive Programs Director position from part-time to full-time
- Enhance multimedia equipment to facilitate group presentations

## Increased Program Capacity

### Outcome

Currently, demand exceeds capacity at the PlayGarden—we want to give even more children and adults the opportunity to take risks, conquer fears, play uninterrupted outside and explore adaptive sports. As the kids who once attended preschool and camp turn into adults, we want to provide more opportunities for teens and adults both through greater program capacity and a wider array of program options.

### Priorities

- Annually increase program offerings for teens and adults (18+) by providing additional Connections sessions
- Increase job opportunities for teens and adults with disabilities by funding more job coach positions
- Increase adaptive sports programs:
  - Continue 12-week wheelchair basketball program
  - Develop adaptive sports summer camp that utilizes adaptive playfield

### Resources Required

- Funding for increased job coaching hours
- Funding for the Connections program, a young adult social gathering for young adults with and without disabilities in our community ages 18 and up
- Ongoing funding for current programs

## Specialized care for our one-acre garden and facilities

### Outcome

Seattle is extremely limited in terms of public play spaces where proper fencing and specially designed play structures and park design encourage adventurous play for kids with disabilities. At 20+ years old, some of the most beloved PlayGarden structures are overdue for maintenance and repair.

### Priorities

- Fix the water feature
- Resurface the volcano play structure
- Commence schematic design and break ground on the adaptive playfield

### Resources Required

- Increase Caretaker position from part-time to full-time
- External funding for large major maintenance projects
- Continued collaboration with Seattle Parks and Recreation on major maintenance issues

## MISSION

Support people with disabilities through inclusive recreation, socialization, employment, and community education.

## VISION

All people with disabilities are fully included in the community.





# SEATTLE PLAYGARDEN

A Garden for Everyone



# DONATE

Support our mission to support people with disabilities through inclusive recreation, socialization, employment, and community education.



[www.seattleplaygarden.org](http://www.seattleplaygarden.org)

1745 24th Avenue South, Seattle, WA 98144

[info@seattleplaygarden.org](mailto:info@seattleplaygarden.org)

# VISIT

The Seattle PlayGarden is a one-acre fully-fenced garden in the heart of Seattle.